

LARGE SCALE WATER & GAS PIPING FLOOR PLAN

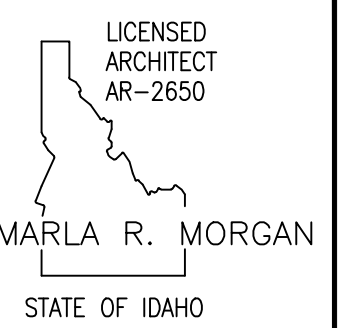
SCALE: 1/4" = 1'-0"



PLUMBING LEGEND	
SYMBOL	DESCRIPTION
V	VENT
VTR	VENT THRU ROOF
CO	CLEANOUT
WCO	WALL CLEANOUT
COTG	CLEANOUT TO GRADE
—	PIPE DROP
—	PIPE RISE
—	BALL TYPE ISOLATION VALVE
—	SOIL OR WASTE PIPING
—	VENT LINE PIPING
—	DOMESTIC SOFT COLD WATER
—	DOMESTIC HOT WATER PIPING
—	DOMESTIC HOT WATER RECIRC.
—	NATURAL GAS PIPING

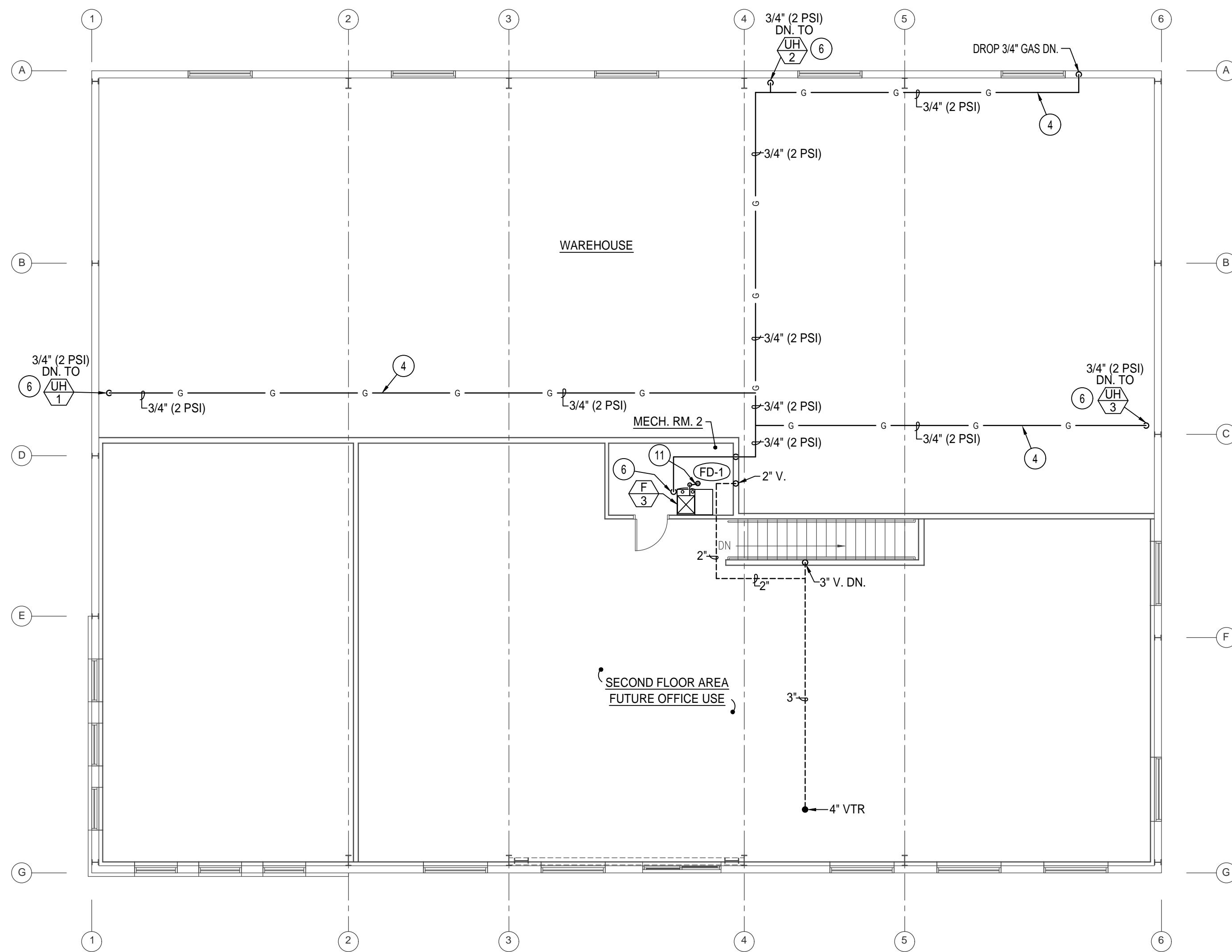
PLAN NOTES:

- SEE CIVIL SITE PLAN FOR CONTINUATION OF 4" WASTE PIPING RUNNING TO SEPTIC SYSTEM.
- SEE CIVIL SITE PLAN FOR CONTINUATION OF 1" DOMESTIC CW PIPING RUNNING BACK TO EXISTING BUILDING WITH WELL PUMP SYSTEM.
- GAS METER BY LOCAL GAS COMPANY SIZED FOR 601,000 BTU AT 2 PSI DELIVERY PRESSURE.
- RISE 3/4" (2 PSI) GAS LINE UP IN EXTERIOR WALL TO ROOF STRUCTURE AND RUN ACROSS TO SERVE UNIT HEATERS AND 2ND LEVEL MECH. ROOM AS SHOWN.
- DROP 3/4" (2 PSI) GAS LINE DOWN IN WALL TO SERVE FURNACES F-1 AND F-2 ON MAIN LEVEL MECH. ROOM 1 BELOW.
- DROP 3/4" GAS LINE DOWN AND CONNECT TO UNIT HEATER OR FURNACE. INSTALL 2 PSI TO OZ. GAS REGULATOR ON 3/4" GAS LINE AND VENT REGULATOR TO THE EXTERIOR AS REQ'D. INSTALL 3/4" OZ. GAS LINE FROM REGULATOR TO UNIT. COMPLETE WITH SHUT-OFF VALVE, DIRT LEG AND FLEXIBLE CONNECTION. SEE DETAIL ON SHEET P-2.
- INSTALL BALL TYPE SHUT-OFF 12" A.F.F. FOR BUILDING WATER MAIN ISOLATION.
- RUN WATER LINES EXPOSED ON WALL. COORDINATE WITH OWNER FOR FINAL HEIGHT AND LOCATION TO AVOID CONFLICT WITH OWNER FURNISHED EQUIPMENT.
- RUN 3/4" CONDENSATE DRAIN LINE FROM DX COOLING COIL AND FURNACE TO FLOOR MOUNTED JANITOR SINK. TERMINATE IN JANITOR SINK WITH 90° DOWNTURNED ELBOW AND AIRGAP.
- RUN 3/4" CONDENSATE DRAIN LINE FROM DX COOLING COIL AND FURNACE TO FLOOR SINK. TERMINATE IN SINK WITH 90° DOWNTURNED ELBOW AND AIRGAP.
- RUN 3/4" CONDENSATE DRAIN LINE FROM DX COOLING COIL AND FURNACE TO FLOOR DRAIN. TERMINATE IN FLOOR DRAIN WITH 90° DOWNTURNED ELBOW AND AIRGAP.



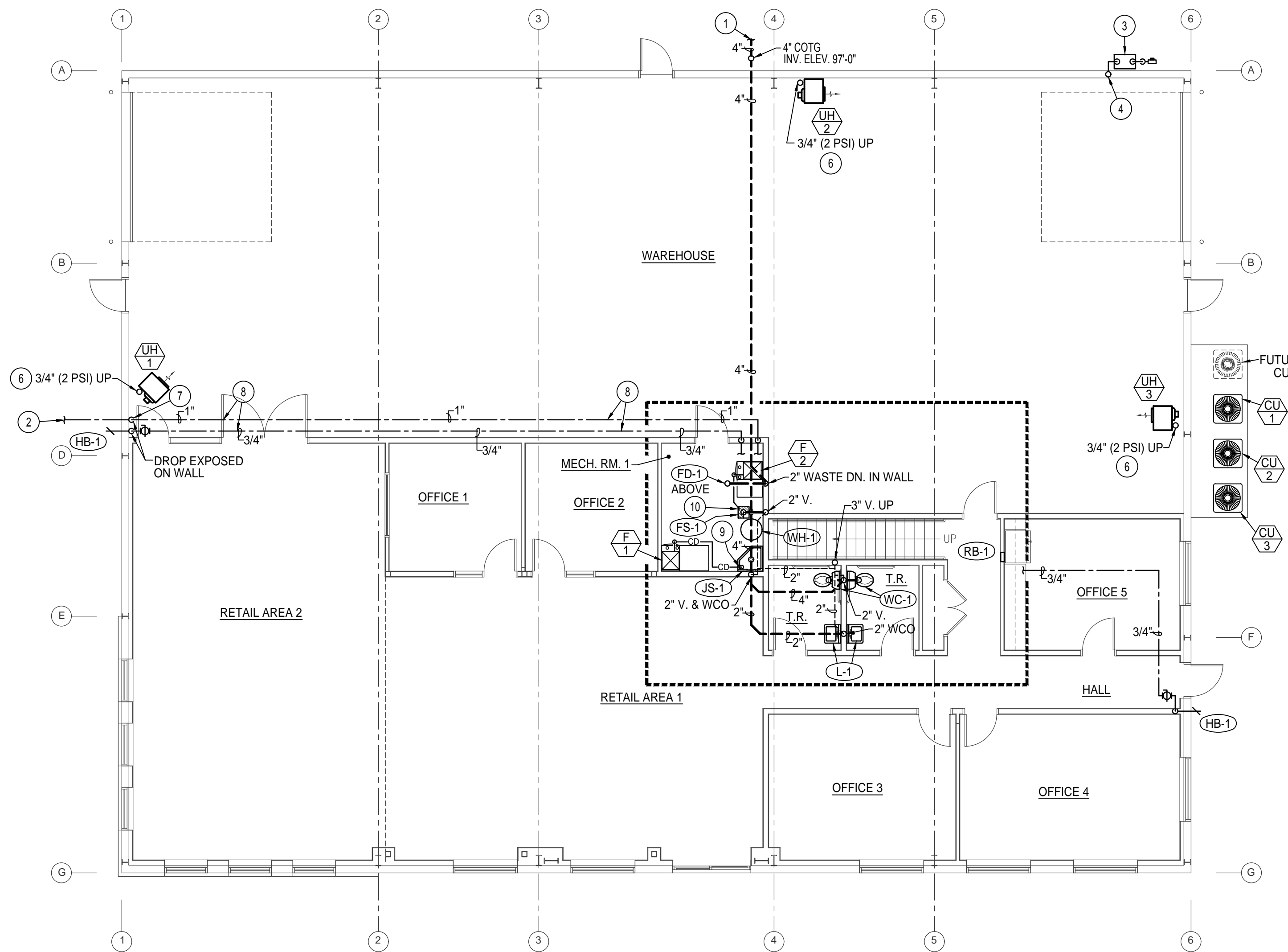
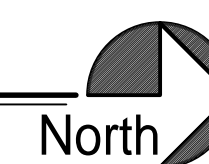
MARLA R. MORGAN, Architect
 Ph: 208.270.2244
 E-MAIL: morganmrm@cobleone.net

OWNER: William Clayson
Wolverine Rocks & Rubber
New Office and Warehouse Building
 6030 S. Yellowstone Hwy Idaho Falls, Idaho 83402



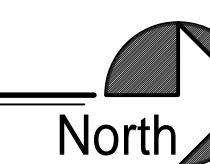
2ND FLOOR PLAN - PLUMBING

SCALE: 1/8" = 1'-0"



1ST FLOOR PLAN - PLUMBING

SCALE: 1/8" = 1'-0"



Engineered Systems Associates
 1355 EAST CENTER
 POCA TELLO, IDAHO 83201
 PHONE: (208) 233-0501
 FAX: (208) 233-0529
 EMAIL: esa@engsystems.com
 ESA JOB NUMBER: 20085

Dec 07, 2020

SHEET CONTENTS

REVISIONS	DATE	DESCRIPTION

SHEET NUMBER

P-1 OF 2

PLUMBING FLOOR PLANS